



**Keys Marine Lab - Then & Now**  
 mm 68.5, Long Key, Florida



**Circa 1960's**



**1965 after Hurricane Betsy**



**Keys Marine Lab - Then & Now**



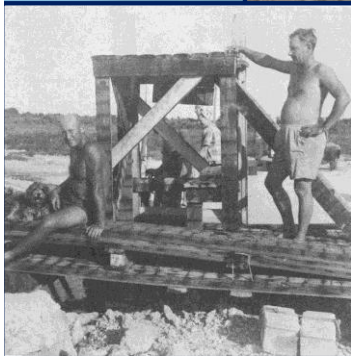
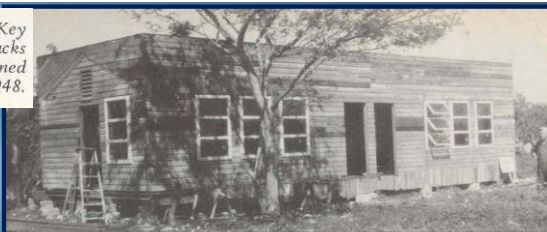
MIKE — HARRY - RICH - JEN - MARILYN - BECKY - BILL - KEVIN

**1975-1977**

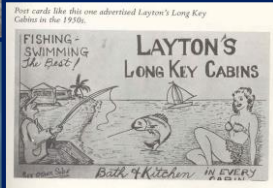


**1990's**

The first restaurant on Long Key was a 16-by-48 foot Army barracks (being set up here) that burned in 1948.



Del, tamed and fit, relaxes in 1947 on a diving board that was the first "tourist attraction" on Long Key. Charlie Parks, a Miami friend stands at rear.

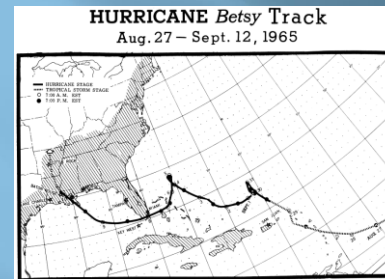


Post cards like this one advertised Layton's Long Key Cabins in the 1930s.





Layton Marina  
Circa 1960s





MIKE — HARRY - RICH - JEN - MARILYN - BECKY - BILL - KEVIN

1975-1977 The Hippies!

26 THE KEYNOTER Thursday, December 14, 1978

## Shark Institute to open soon

LAYTON — Sea World of Florida will open its second marine life park in Florida when it completes the construction of Sea World's Shark Institute at Layton.

The 6.5-acre site includes a 3-acre outdoor area in which such shark species as lemon, bull, nurse, bonnet, black and tiger will be displayed.

The 15-foot deep area, known as the Shark Lagoon, will be bordered by wooden boardwalks and an elevated Shark Watch.

Channels, a meandering channel known as the Shark Shadow will house smaller, though not necessarily less aggressive, species as well as rays, seaflap and other creatures.

The channels will be crisscrossed with a number of foot bridges.

The display is being built at a cost of \$1.3 million, exclusive of land acquisition.

Police plans call for development of a marine mammal habitat and construction of a



THIS AERIAL photograph shows Sea World of Florida's Shark Institute at Layton, with the large Shark pen and smaller channels.

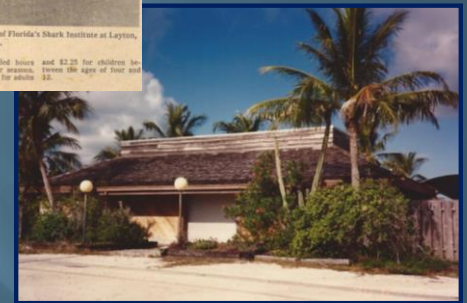
live shark aquarium. Sea World's Shark Institute

will be open from 9 a.m. to 5 p.m. daily, with extended hours during peak visitor seasons.

Admission is \$1.50 for adults and \$2.25 for children between the ages of four and 12.

Layton, 1978  
Sea World of Florida  
opens  
Shark Institute

Visitors Entrance  
now KML Classroom & Dry Lab





Marina and docks



Lagoon for dolphin shows



Snack Shack  
Later, the Conch Lab

Shark Institute closes to the public in 1982, but remains a holding site for Sea World's sharks and other animals until 1988



## Complete Florida Keys TV LISTINGS! SUNDIAL FREE EDITION

Vol. 9, No. 22 / June 24, 1984

### Shark facility turns effort to research



Facilities that were built to accommodate paying visitors at the Sea World Shark Institute now provide a pleasant environment for researchers only. The facilities to be used solely for research and collection after closing to the public two years ago. Staff photo by PHIL POLY

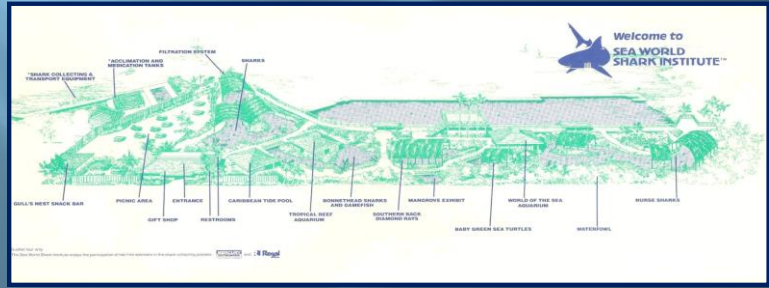
By PHIL POLY  
Staff Writer  
LAYTON — The great killer whale and plastic alligators were dumped here in 1974, and long ago.  
The park's marine animals, however, are gone. Sharks and other animals of the facility surrounding the park at Sea World's Shark Institute are being.  
Although the sea and land animals are gone, the marine life that once thrived in the park's enclosure is still here. The facility is now used for research and collection after closing to the public two years ago.  
Mr. Ketchum, administrator of the shark institute, said the facility was converted as a collection base for sharks that would be shipped to Sea World's marine parks in Orlando, San Diego and Oahu.  
Sea World's Shark Institute

Contents of the Sundial

Paul Harvey	2
Events	3
Energy audits	4
Crossword	6
The Strand	7
TV Scope	9



1988 The Nature Conservancy purchases Sea World Shark Institute



Florida Department of Natural Resources (FDNR), now Florida Fish and Wildlife Conservation Commission, and the Florida Institute of Oceanography/State University System form a partnership to purchase and manage the Long Key facility



The Keys Marine Lab is formally dedicated in 1989

University of West Florida  
 Florida State University  
 Florida A&M University  
 Department of Environmental Protection  
 University of North Florida  
 Florida Sea Grant  
 University of Florida  
 University of Central Florida  
 University of South Florida  
 Eckerd College  
 FIO  
 Florida Marine Research Institute  
 Mote Marine Laboratory  
 Florida Atlantic University  
 Florida Gulf Coast University  
 Florida International University  
 University of Miami  
 NOVA  
 Southeastern University  
 KEYS MARINE LAB

The Florida Institute of Oceanography works with an array of Universities and Agencies to support, and promote Marine Science Education and Research

## The Keys Marine Laboratory

Circa 1990's

Providing the facilities to expand our knowledge of the marine environment through research and education



Seawater system at KML for education and research



Students at KML



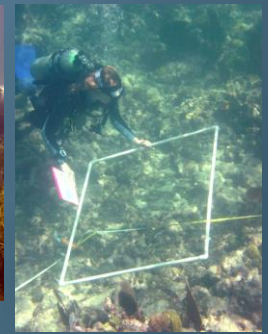
**Marine Research**



**...at KML wet lab**



**...nearby  
Marine  
Habitats**



## Hurricane Wilma October 24, 2005





## Then the water receded...



...walking toward  
the wet lab



## Rebuilding Docks & Sea wall Fall 2007





**Classroom and Labs restored**



**New decks  
and stairs for  
the dorms**

## Science Annex in the restored Conch Lab



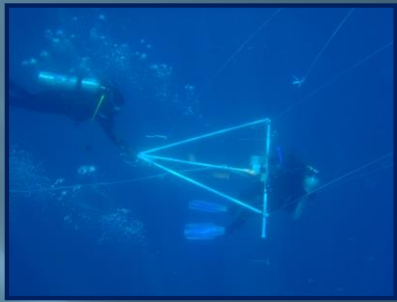
**The KML Vision:  
To develop the marine  
scientists of tomorrow...**

Florida Atlantic University  
Fish Behavior class



**...based on a foundation of  
field science recognized for  
excellence in the state of  
Florida, the region, the U.S.  
and world-wide**

**KML Mission:**  
To develop the marine  
scientists of tomorrow  
by providing students an  
*on site field research  
experience* with  
complementary  
classroom instruction &  
laboratory experiences



Brevard Com College



Randolph-Macon College



Shippensburg University

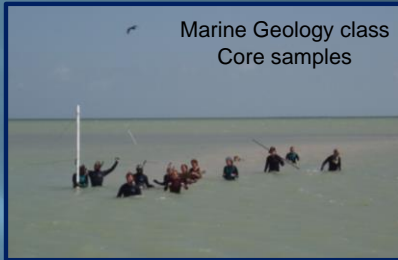


Duke University





University of Georgia  
Foram research



Marine Geology class  
Core samples



Marine Ecology class  
Near-shore Seining



SUNY Buffalo  
Jellyfish research



MURI Group  
Testing equipment



Ohio State  
Marine Gastrotrichia



SUNY Buffalo  
Coral symbiosis

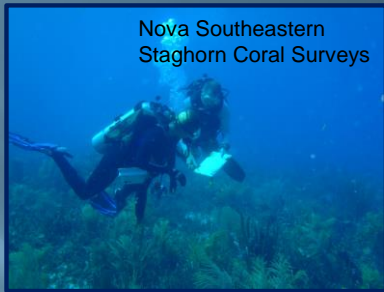


Florida Gulf Coast  
Water samples





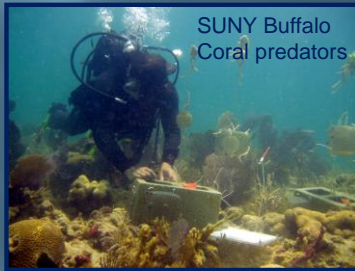
MURI Group  
Polarized Light



Nova Southeastern  
Staghorn Coral Surveys



SUNY Buffalo  
Coral-algal symbiosis



SUNY Buffalo  
Coral predators

## ON THE WATER





**Keys Marine Lab**  
mm 68.5  
Long Key, FL

